

# US85

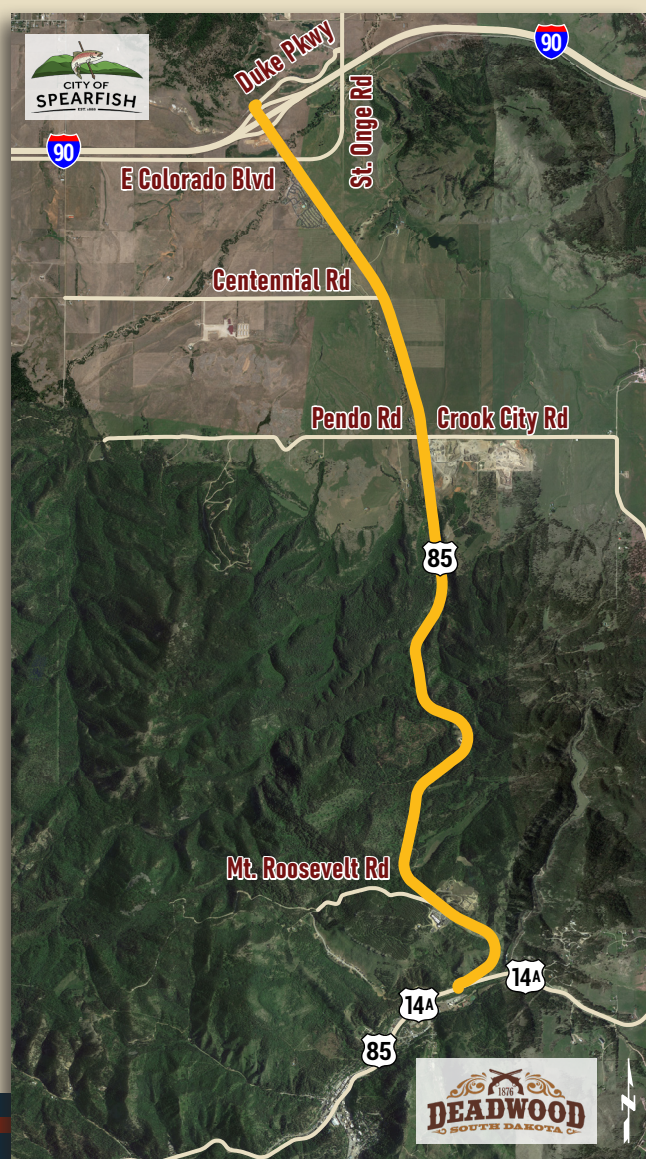
CORRIDOR STUDY

SPEARFISH TO DEADWOOD

# Public Information Open House Meeting

**Wednesday, July 19, 2023**  
**5:30-7:30 p.m.**

Homestake Adams Research & Cultural Center  
150 Sherman St.  
Deadwood, SD 57732



**Public comment period will be open through  
Friday, Aug. 18, 2023.**

Comments can be provided via the following ways:

- **In-person** during the open house meeting
- **Online** at <https://us85spearfishtodeadwood.com>
- **Written** comments submitted to:

Mark Lutjeharms, Consultant Project Manager  
2000 Q St. Ste 500  
Lincoln, NE 68503

## Project Overview

A planning-level corridor study is being performed for the portion of U.S. Highway 85 (US85) between the cities of Spearfish and Deadwood in Lawrence County, South Dakota.

The purpose of this study is to evaluate existing and future conditions of the corridor and potential improvements related to roadway conditions, traffic operations, and safety.

The study corridor begins at Duke Parkway, just north of Interstate 90 (I-90) at Exit 17 in Spearfish. It continues south to the junction with U.S. Highway 14 Alternate (US14A) in Deadwood.

Work on the corridor study began in winter 2022/2023. Additional information about the project will be made available as the study progresses.

## Project Process

To date, baseline information including traffic counts, crash data, and past studies have been collected, as well as a review of the existing traffic operations, future operations analysis, and safety analysis. A final report including improvement recommendations is anticipated to be completed in spring 2024.

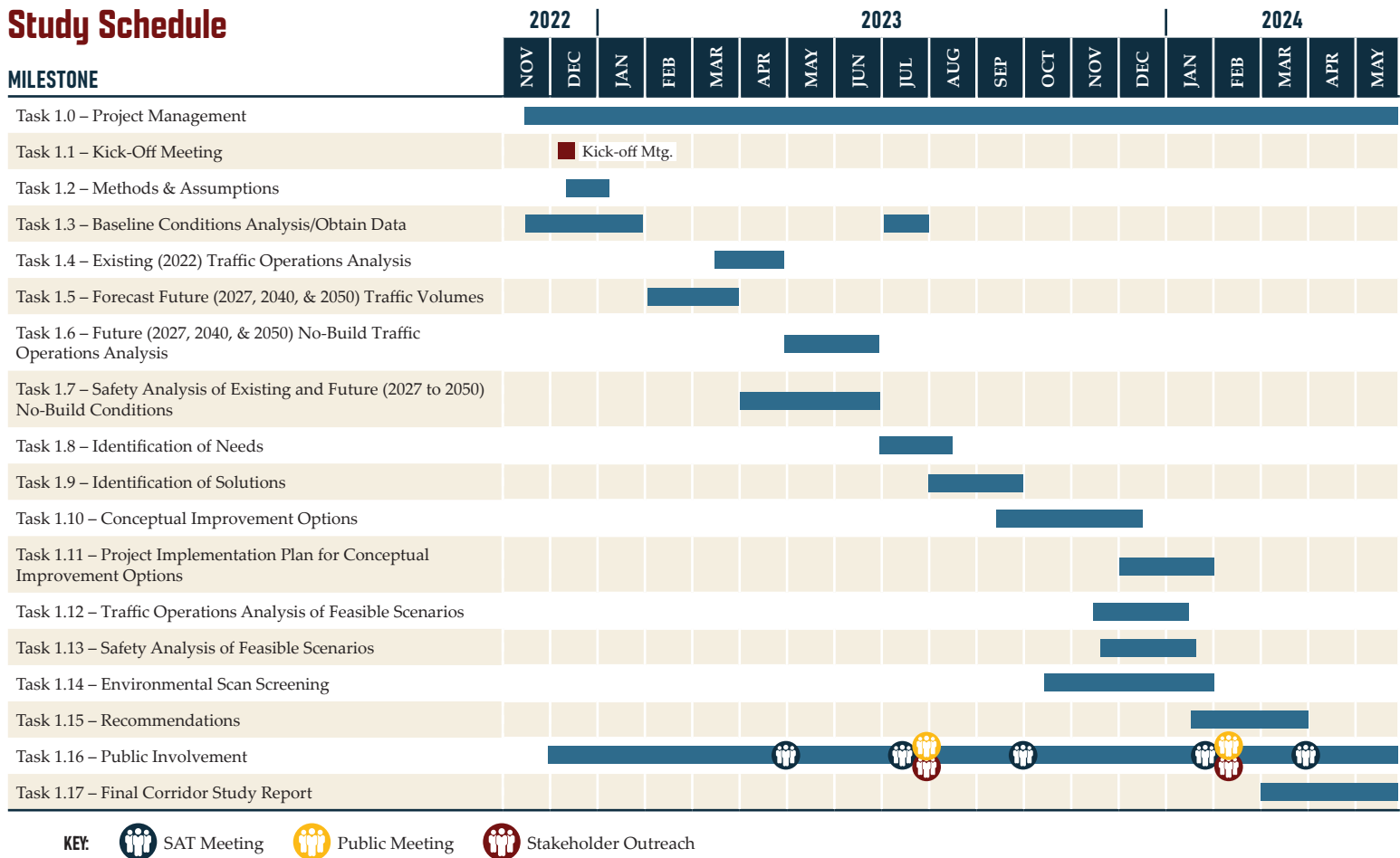
The South Dakota Department of Transportation (SDDOT) assembled a Study Advisory Team (SAT) comprised of representatives from SDDOT, City of Spearfish, City of Deadwood, Lawrence County and the Federal Highway Administration to guide the development of the corridor study.

Community input is a critical consideration in the study's final recommendations of technically sound improvements along the corridor. Project area stakeholders and the public are invited to provide input on the study and recommended improvements.

## What the Study Will Cover

- Existing (2022) Traffic Operations Analysis
- Forecast Future (2027, 2040 & 2050) Traffic Volumes
- Future (2027, 2040 & 2050) No-Build Traffic Analysis
- Safety Analysis of Existing and Future Conditions
- Identification of Needs and Solutions
- Conceptual Improvement Options and Implementation Plans
- Traffic Operations Analysis of Feasible Scenarios
- Environmental Scan Screening
- Final Recommendations for Corridor

## Study Schedule



## Project Contacts

Tammy Williams  
SDDOT Project Manager  
tammy.williams@state.sd.us

Mark Lutjeharms  
JEO Consulting Group  
mlutjeharms@jeo.com



For more information, please visit  
<https://us85spearfishtodeadwood.com>